

WHO ARE YOU?

I CHALLENGE YOU...

...FOR THE RIGHT TO WIELD THE MASTER SWORD!!

THE LEGEND OF
ZELDA
A LINK TO THE PAST™

Illustrated adventures based on the legendary game series

MY NAME IS ROAM!

KA-TANNG!!



ST-IT-

DEFEND YOURSELF!



LET SUR
E!



WHAT ARE YOU?

SKR-EEK!

BY
SHOTARO
ISHINOMORI

CHAPTER EIGHT
**ROAM,
THE MYSTERY KNIGHT**



IF YOU ARE *TRULY* THE HERO...

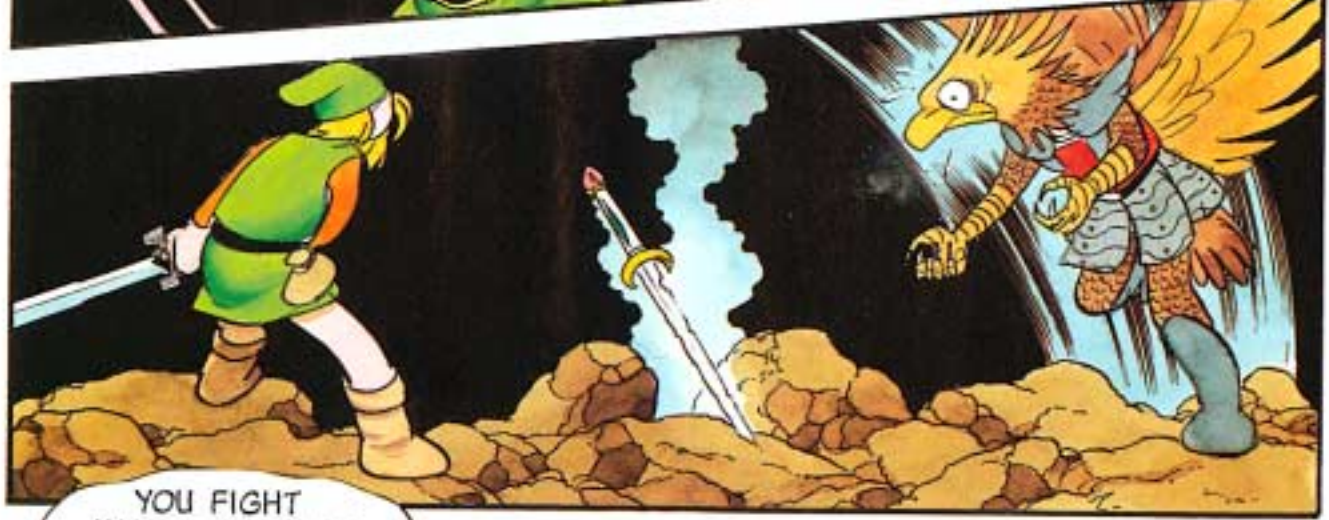
...AND YOUR SWORD IS REALLY THE *MASTER SWORD*...



...YOU SHOULD BE VALIANT ENOUGH TO COUNTER MY ATTACK!!



H A H ! !



YOU FIGHT WELL...OR IS IT JUST LUCK?



I MAY HAVE MISJUDGED YOU, HERO...



WHAT A LOON!!

IT IS WRITTEN IN THE **BOOK OF MUDORA**: "HE WHO CORRUPTS THE LAND OF GOLD SHALL FALL TO THE SHAFT OF THE ENCHANTED ARROW OF SILVER..."

MY FAMILY HAS ALWAYS **EXCELLED** IN ARCHERY, AND IT IS MY **DESTINY** TO DESTROY GANON!

I HAVE NOT YET OBTAINED THE **ENCHANTED ARROW**, BUT...

SHNIK!

ENCHANTED ARROW?

ROAM IS THE DESCENDANT OF ONE OF THE KNIGHTS OF HYRULE WHO WAS A **MASTER ARCHER**. WHEN HE DISCOVERED THAT **AGAHNIM** WAS SENDING MEMBERS OF THE SEVEN WISE MEN'S LINE TO THE DARK WORLD, HE WENT AFTER THEM THROUGH THE PORTAL NEAR DEATH MOUNTAIN.

SO YOUR ANCESTORS WERE KNIGHTS OF HYRULE? **MINE TOO!**

YES, THOUGH I DOUBT THEY WERE OF THE **SAME BLOOD** AS YOURS... DO NOT BE **DECEIVED** BY MY FORM... WHEN I DO BATTLE, I AM **TRANSFORMED** INTO A MONSTROUS **EAGLE** BY THE DARK FORCES OF THIS WORLD!

PERHAPS WE CAN JOIN FORCES TO FIND **PRINCESS ZELDA!**

WHAT?!
PRINCESS ZELDA
IS HERE, IN THE
DARK WORLD?!!

WHERE WERE
THE **KNIGHTS**?
WHY DIDN'T THEY
PROTECT HER?!

THEY MUST BE **MAD**,
GIVING A **WEAKLING** LIKE
YOU THE MASTER SWORD
AND SENDING YOU TO
RESCUE HER!

WEAKLING?

I'LL
SHOW YOU
WHO'S
WEAK!!

I'VE BEEN THROUGH
A LOT TO GET THIS
FAR! I HAVE THE PENDANTS
OF POWER, WISDOM AND
COURAGE TO **PROVE** IT!

I FIND THAT
DIFFICULT TO BELIEVE,
WITH YOUR LACK
OF **DISCIPLINE**,
AND **OBVIOUS**
IMMATURITY...

WELL, I'M OFF TO
FIND THE ENCHANTED
SILVER ARROW...

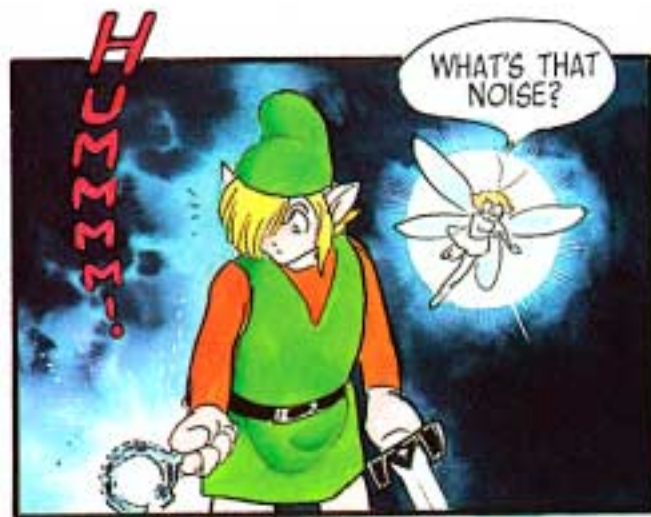
...WITHOUT IT, NO
ONE CAN DEFEAT
GANON.

I HAVE A FEELING
THAT THE TIME WILL
COME WHEN WE MUST
JOIN FORCES AGAINST
HIM...

...UNTIL THEN,
DO TRY TO
STAY ALIVE.

STRANGE...

OF ALL THE CRAZY,
MIXED-UP CREATURES
IN THIS WORLD,
THAT GUY BEATS
'EM ALL!



WHAT'S THAT NOISE?

...ZZZZZ...



...AND THE EASTERN PALACE WAS SHAKEN BY A QUAKE THAT ALMOST LEVELLED IT...



HUMMMMM!

SAHASRAH!!



SHHH...DID YOU HEAR THAT? I THOUGHT I HEARD LINK'S VOICE...

I DIDN'T HEAR ANYTHING...

YOU MUST BE HEARING THINGS... AFTER ALL, YOU'VE BEEN THINKING ABOUT HIM A LOT LATELY...



YOU'RE PROBABLY RIGHT. ANYWAY, WHERE WAS I? YES, THE STRANGE PENDANT...



...WHEN THE COMFORK RINGS! THE GIRL IN THE CRYSTAL WASN'T KIDDING WHEN SHE SAID IT MIGHT BE HELPFUL!

I CAN SEE THEM...

NOW I
HEAR HIM!



BUT IF HE IS IN
THE DARK WORLD... AHHH,
IT MUST BE THE MAGICAL
COMFORK, OF LEGEND!
THE VIBRATIONS OF THIS
CRYSTAL TUNING FORK
CAN DISTORT TIME
AND SPACE...

WHILE THE COMFORK
VIBRATES, YOU CAN
COMMUNICATE WITH BEINGS
ON DIFFERENT PLANES
OF EXISTENCE...

SO
DO
I...



LINK?
I'M GLAD
YOU'RE **SAFE!**

THROUGH THE COMFORK'S MAGIC, LINK
TOLD HIS FRIENDS ABOUT HIS JOURNEY
THROUGH THE DARK WORLD AND ABOUT
HIS BATTLES AT THE PYRAMID AND THE
PALACE OF DARKNESS. AS HE SPOKE,
SAHASRAHLA NOTED SIMILARITIES BETWEEN
THE DARK WORLD AND HYRULE ON HIS
MAP OF THE LAND.



LINK, LISTEN!
ACCORDING TO MY
CALCULATIONS, THE LOCATION
OF THE **PYRAMID** IN THE DARK
WORLD CORRESPONDS TO
THAT OF **HYRULE CASTLE**
IN THE LIGHT WORLD!

THE **PALACE OF
DARKNESS**, WHICH
YOU DESTROYED, MUST
SOMEHOW BE **CONNECTED**
TO HYRULE'S
EASTERN PALACE!

THAT EXPLAINS
THE SUDDEN
EARTHQUAKE...

THIS EVENT LEADS ME
TO BELIEVE THAT THE DARK
WORLD IS LIKE A WARPED
REFLECTION OF OUR LIGHT
WORLD, AND THAT THE TWO
WORLDS ARE SOMEHOW
CONNECTED!

I'M GLAD YOU
FOUND A WAY TO
COMMUNICATE
WITH US, LINK!

ALSO, IT APPEARS
THAT THE **INNER CONTENTS**
OF YOUR **MIND** WILL ALSO
INFLUENCE THE **EXTERNAL**
SHAPE OF YOUR **BODY** IN
THE DARK WORLD!

BECAUSE THE MIND
OF THE MAIDEN WAS SO
PURE, SHE WAS IMPRISONED
IN THE CRYSTAL COCOON...

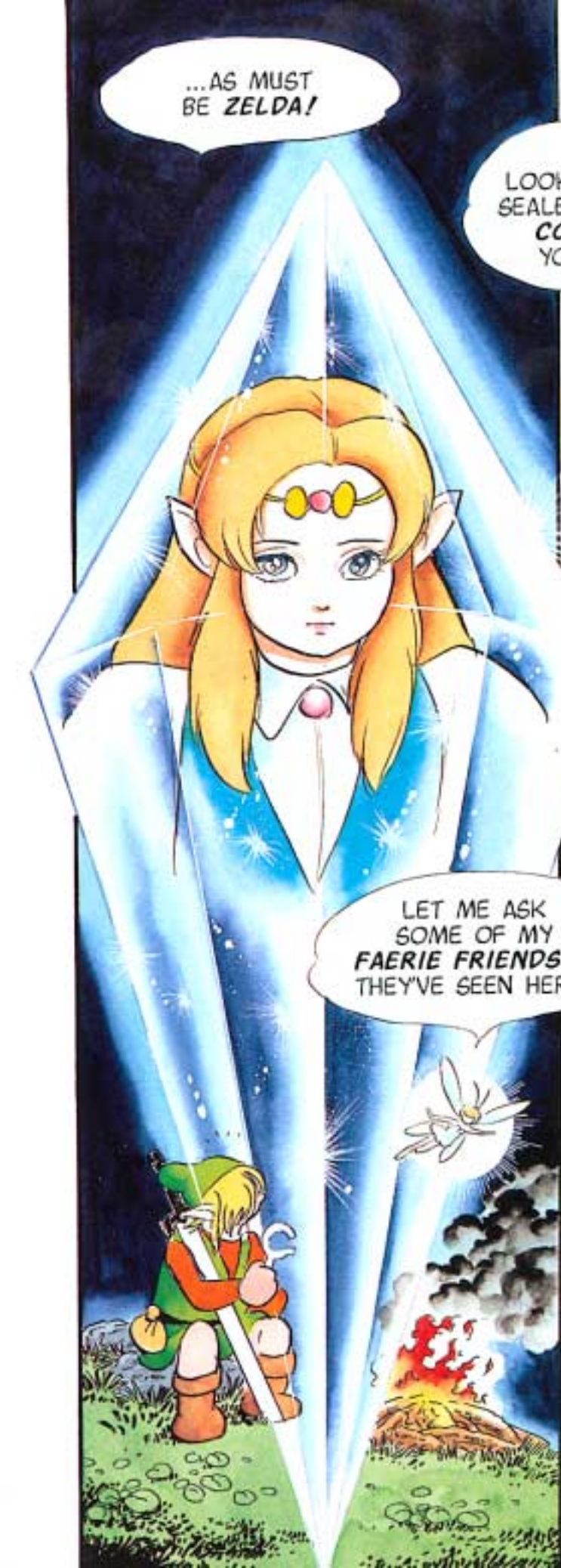
...AS MUST
BE ZELDA!

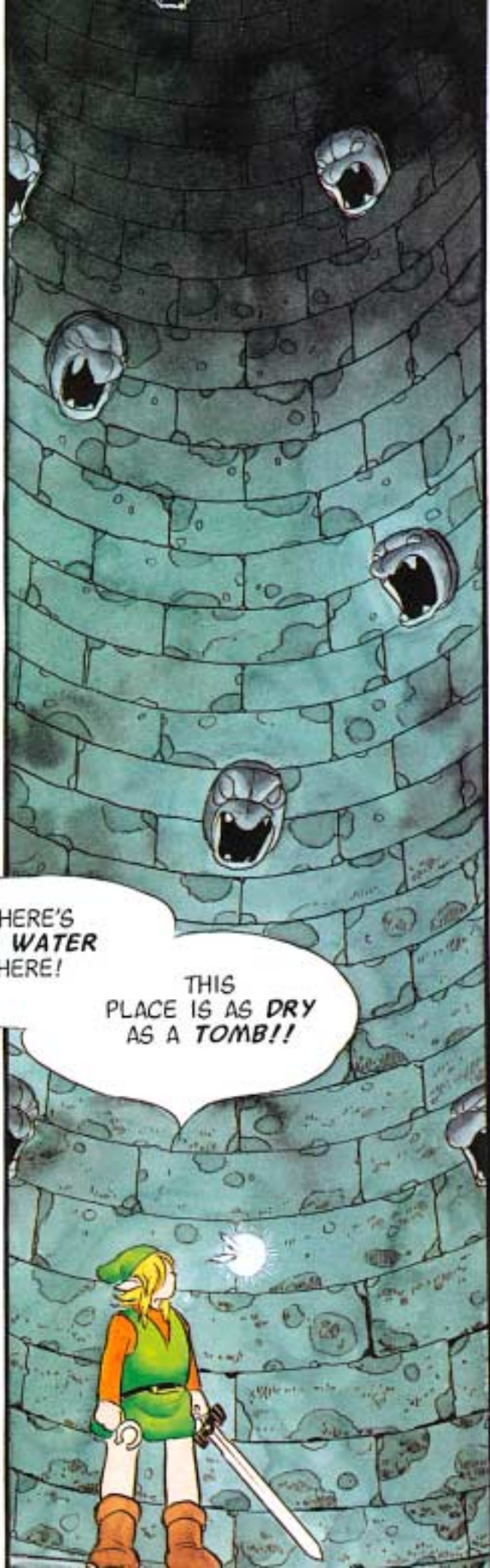
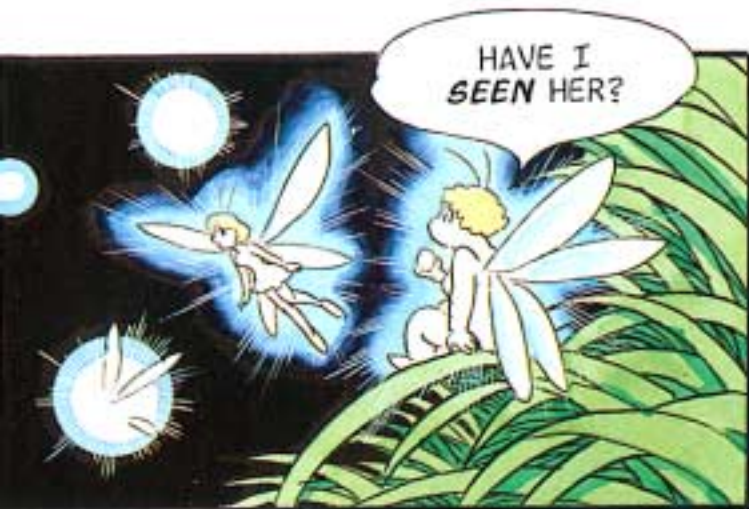
SAY, I'M
LOOKING FOR A GIRL
SEALED IN A **CRYSTAL**
COCOON. HAVE
YOU **SEEN** HER?

"YA KNOW, I OVERHEARD SOME
MONSTERS TALKING ABOUT
SOMETHING LIKE THAT NEAR
THE SWAMP PALACE..."

LET ME ASK
SOME OF MY
FAERIE FRIENDS IF
THEY'VE SEEN HER...

THE
SWAMP PALACE,
EH?



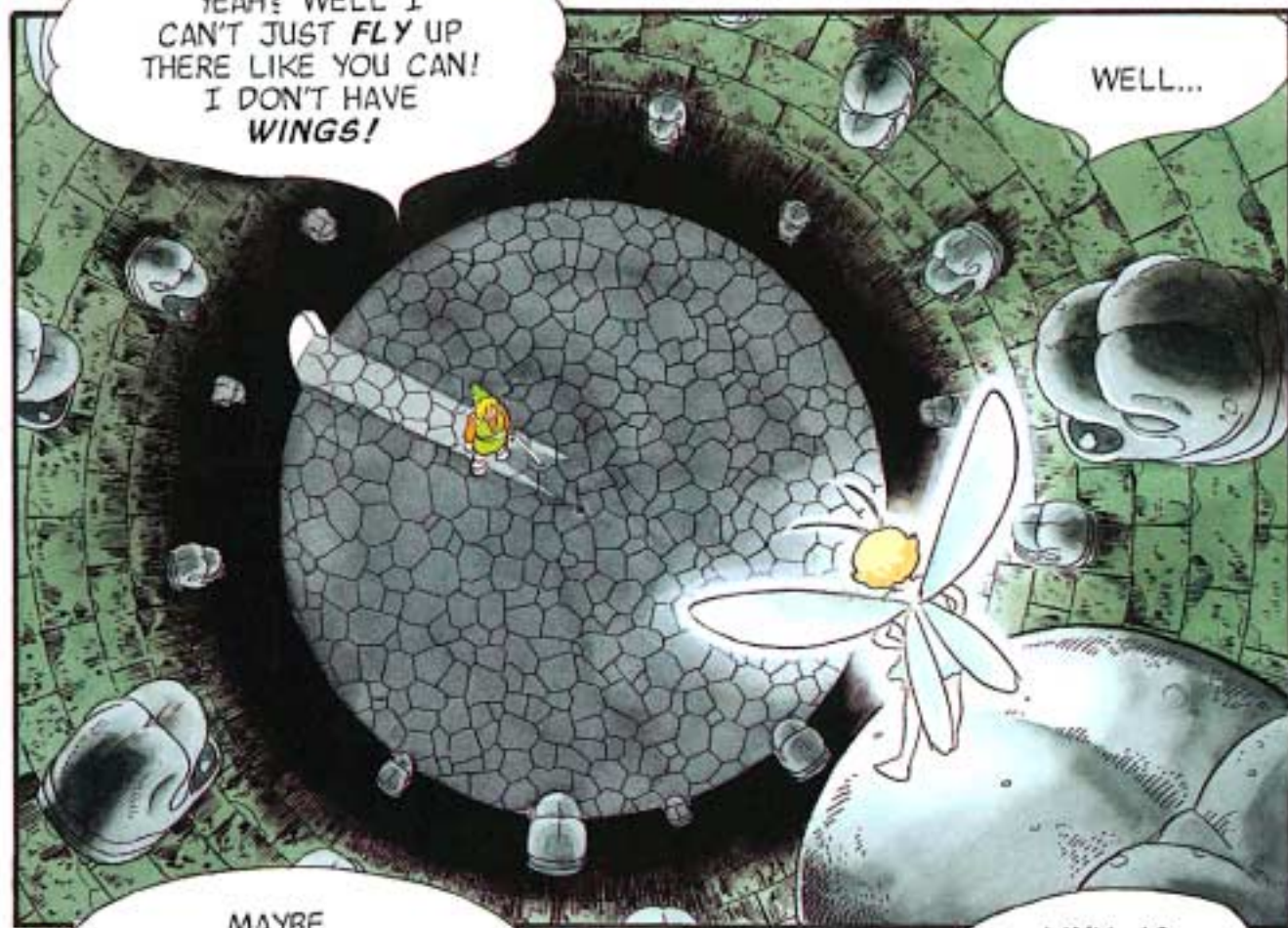




LINK! I FOUND AN OPENING UP HERE!



YEAH? WELL I CAN'T JUST FLY UP THERE LIKE YOU CAN! I DON'T HAVE WINGS!



WELL...

MAYBE SAHASRAHLA HAS AN IDEA! I'LL CALL HIM WITH THE COMFORK!



SAHASRAHLA! CAN YOU HEAR ME?

LINK, IS THAT YOU?



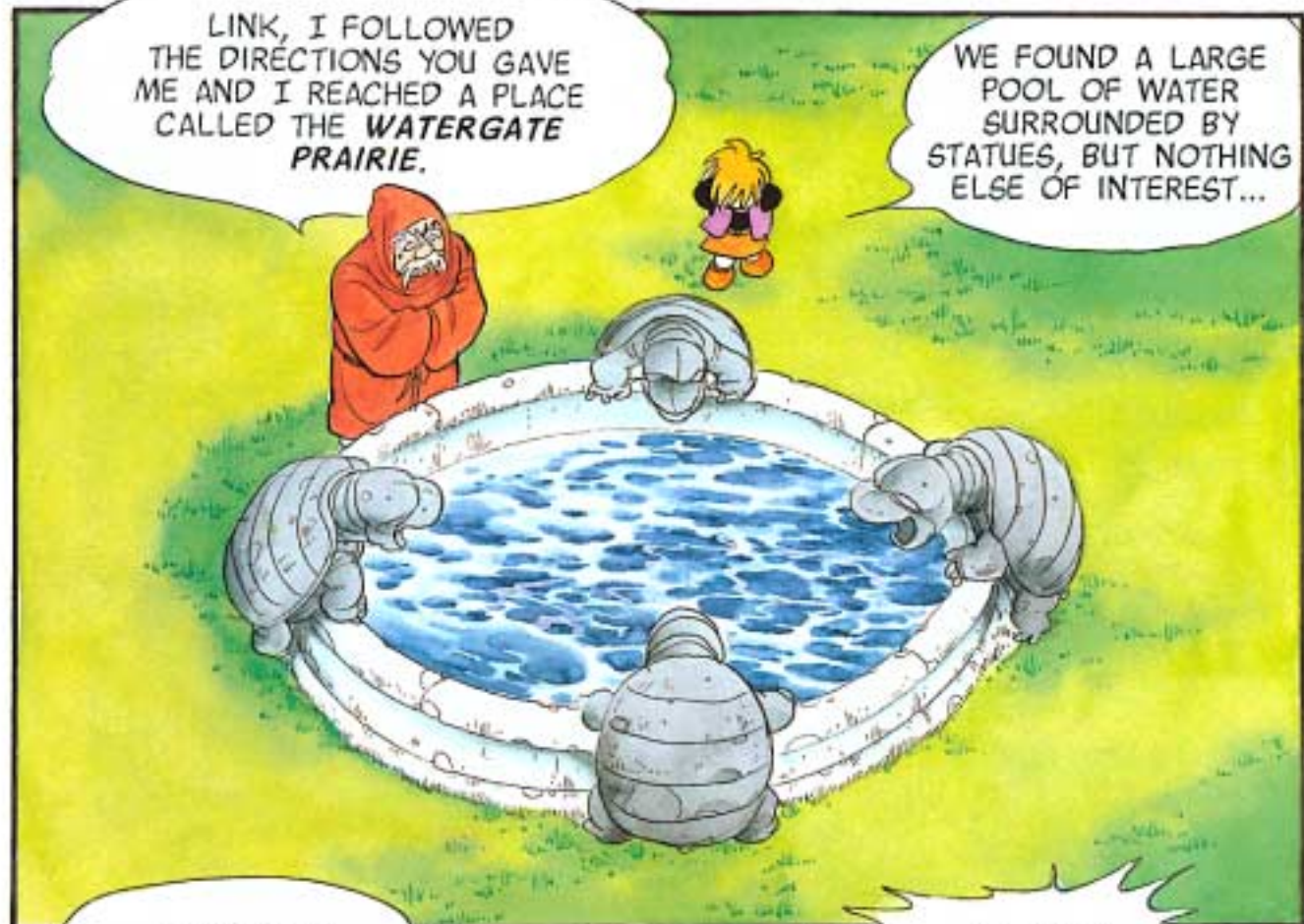
LINK, I FOLLOWED
THE DIRECTIONS YOU GAVE
ME AND I REACHED A PLACE
CALLED THE **WATERGATE
PRAIRIE**.

WE FOUND A LARGE
POOL OF WATER
SURROUNDED BY
STATUES, BUT NOTHING
ELSE OF INTEREST...

SO THERE'S
WATER ON **YOUR**
SIDE?

LOOK IN
THE **POOL!**
I **SEE** LINK!

LINK!!
BEHIND
YOU!!





K-K-A-CIUNK



TEK!!



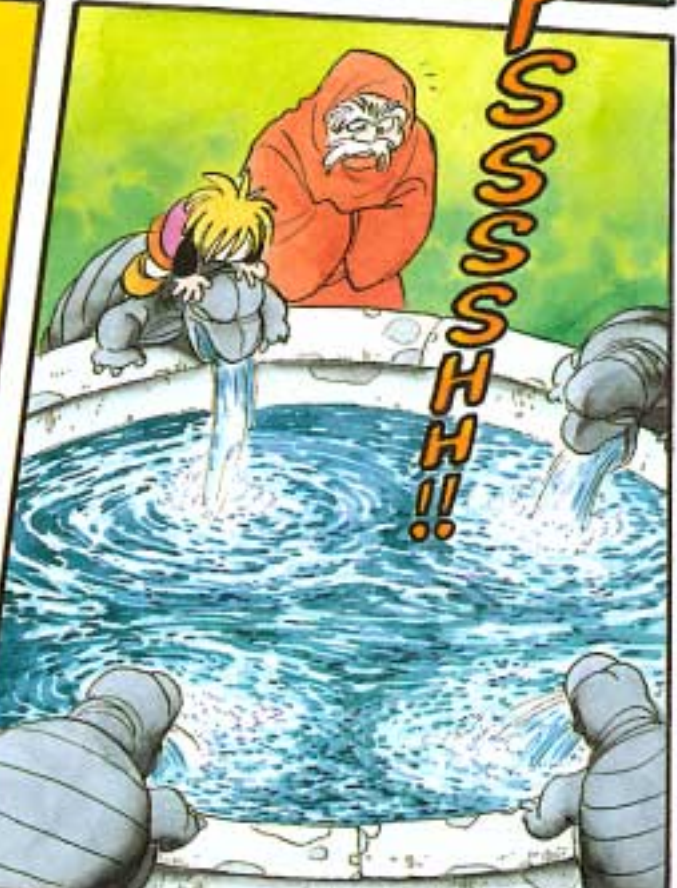
THUNNK!

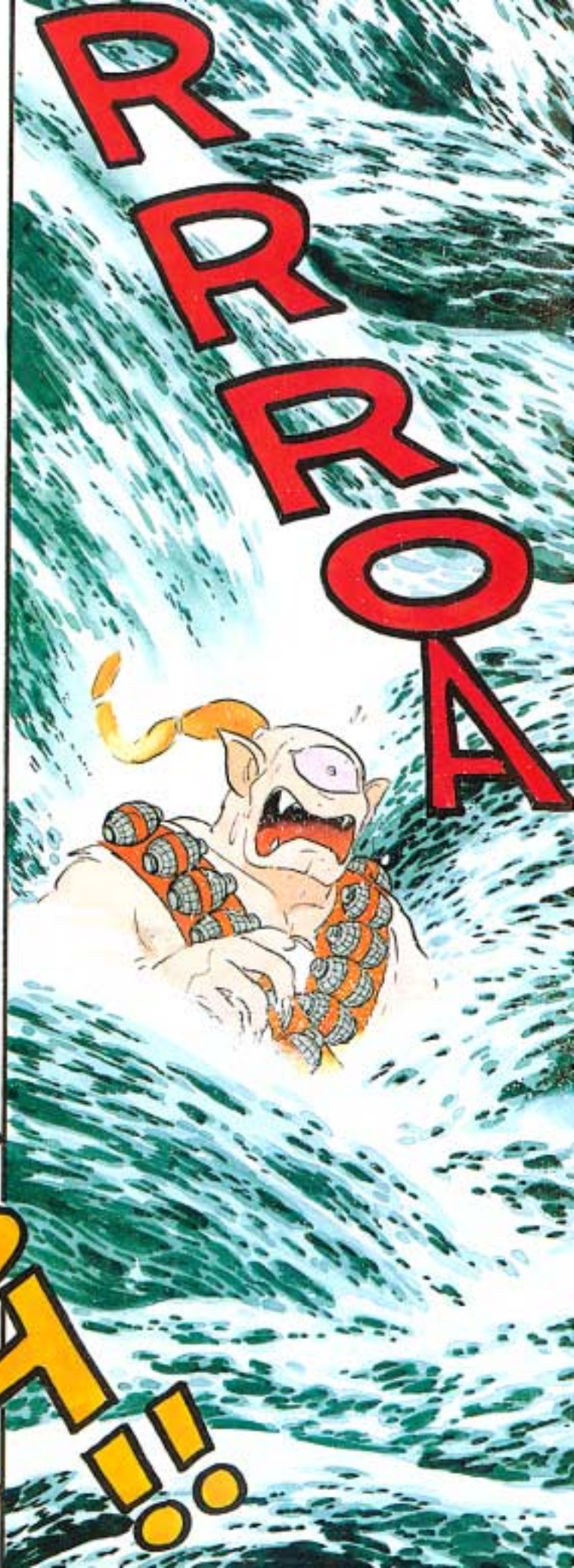
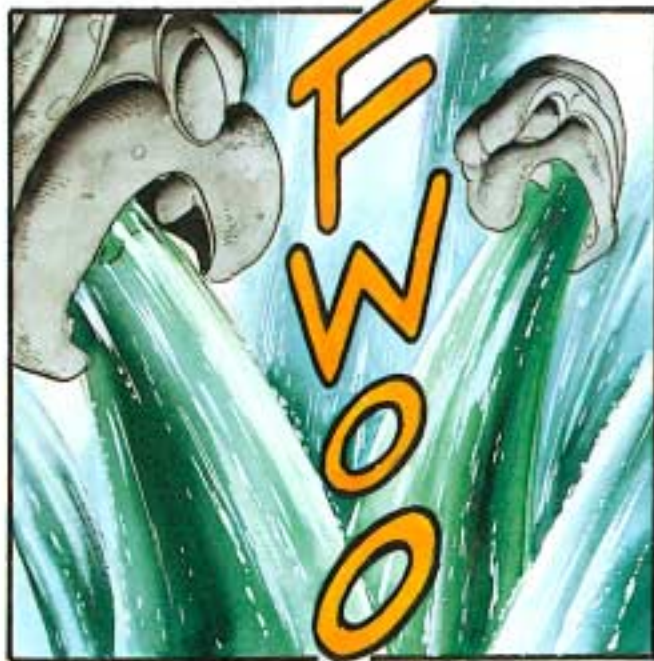
HEH HEH HEH... I SHUT THE DOOR! NOW YOU'RE **TRAPPED** IN HERE!

WHEN WE TAKE YOU TO **GANON**, HE'LL REWARD US **WELL!**



DON'T COUNT YOUR **RUPEES** YET... YOU STILL HAVE TO DEAL WITH ME BEFORE YOU **COLLECT** THAT REWARD!





YAAAAAAAAAH!!



AAA



RRR!!!

TO BE CONTINUED